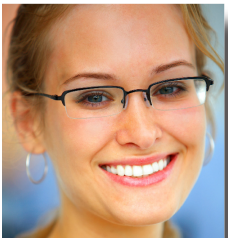


## EyeMed Access Plan D

This vision discount program is offered to all SDC plan members. You and your family members will automatically receive discounts toward these services through LensCrafters, Sears, Target, JCPenney, Pearle Vision Centers, and Optique locations worldwide, and at participating providers. The EyeMed Access Plan D is a discount plan providing reduced fees for exams, frames, lenses, and contact lenses. The reduced fees apply when a complete pair of eyeglasses is purchased; otherwise, the discount is 20% off the retail price. All discounts are provided at the point-of-service and the frequency is unlimited. To find a participating provider near you, **please call toll-free 1-866-723-0513 or visit [www.eyemedvisioncare.com](http://www.eyemedvisioncare.com).**



The EyeMed Access Plan D also provides a 15% savings off the retail price of Lasik and PRK procedures at all U.S. Laser Network Centers. **Members must first call 1-877-5LASER6 for the nearest facility and to receive authorization for the discount.**



Superior Dental Care  
Group #: 9231382

*This vision care discount program is provided to you in conjunction with your Superior Dental Care plan.*

EyeMed  
VISION CARE®



Superior Dental Care  
Group #: 9231382

*This vision care discount program is provided to you in conjunction with your Superior Dental Care plan.*

EyeMed  
VISION CARE®

**Access Plan D**

**Access Plan D**



Questions:

EyeMed Providers Call: 1-800-521-3605  
or visit [www.eyemedvisioncare.com](http://www.eyemedvisioncare.com)  
to receive plan information and  
authorization on-line.



Questions:

EyeMed Providers Call: 1-800-521-3605  
or visit [www.eyemedvisioncare.com](http://www.eyemedvisioncare.com)  
to receive plan information and  
authorization on-line.

**Exam with Dilation as Necessary**

\$5 off comprehensive exam

\$10 off contact lens exam

35% off retail price

**Frames**

**Standard Plastic Lenses**

Single Vision

\$50

Bifocal

\$70

Trifocal

\$105

**Lens Options**

UV Coating

\$15

Tint (Solid and Gradient)

\$15

Standard Scratch Resistant Coating

\$15

Standard Polycarbonate

\$40

Standard Anti Reflective Coating

\$45

Standard Progressive (Add-on to Bifocal)

\$65

Other Add-ons and Services

20% off retail price

**Contact Lenses** (discount applies to materials only)

Conventional

15% off retail price

**Lasik or PRK Vision Correction**

15% off retail price or

5% off promotional price

**Frequency**

Examination

Unlimited

Frames

Unlimited

Lenses or Contact Lenses

Unlimited

This plan will take effect on the same date of your dental plan's effective date, and can be used through the date printed on your card. This will not replace any company-sponsored vision plans; it simply provides additional options and savings. This discount program is provided by Superior Dental Care at no additional cost.